



2017 Alpine Rally of East Gippsland

Competitor Update #3

10th April 2017



Welcome to the third update for aspiring entrants in the Alpine Rally of East Gippsland for 2017.

The organising team have been working flat out this year to bring you the best possible event that we can. Hopefully we can deliver an event that has lots of what people love about the Alpine and a few new things to make it even better.

As always the directing team welcome your feedback and questions. You can contact us via the contact page of www.alpinerally.org.au or contact Clerk of the Course Owen Polanski via email owen@alpinerally.org.au or phone 0447 579 439.

Key Dates:

- Registration closes at 6pm on Friday 21st July
- Supplementary Regulations sent to all people who are registered on Sunday 23rd July
- Entries open for registered crews on Sunday 30th July at 10am

Entries:

- For 2017 we have increased the field limit to 120 cars in response to the level of interest from potential competitors.
- The entry fee has been increased to \$1,400 due to cost pressures on our budget.
- Entries will open earlier than ever this year, on 30 July, to give some certainty to crews coming from interstate.
- We will have up to 25 reserve places available which is based on previous years of having all reserves eventually getting a run due to withdrawals.
- Entries will only be accepted via the online entry form on our website. It's important that you gather all the information you need before attempting to complete the entry form. This information includes: Licence details (both civil and CAMS) for entrant, driver and co-driver, HRA membership numbers, car details, payment details and nominated official details. You can log in again later and complete other information such as service crew details etc.
- For 2017 dinners tickets will not be a part of the entry fee, instead we are including two Alpine Polo shirts that are competitor specific in the entry. You can order dinner tickets with your entry at a cost of \$40 each. This is in addition to the entry fee.
- As part of the documentation you receive with the Supp Regs there will be a guide to successfully completing the online entry form.



Topperformance-Koni have been a long-time supporter of the HRA and the Alpine Rally and we are delighted and proud to see them continue the relationship in 2017.

www.topperformance.com.au

We're fuelling
The Alpine Rally of East Gippsland



United
Fueling your Community



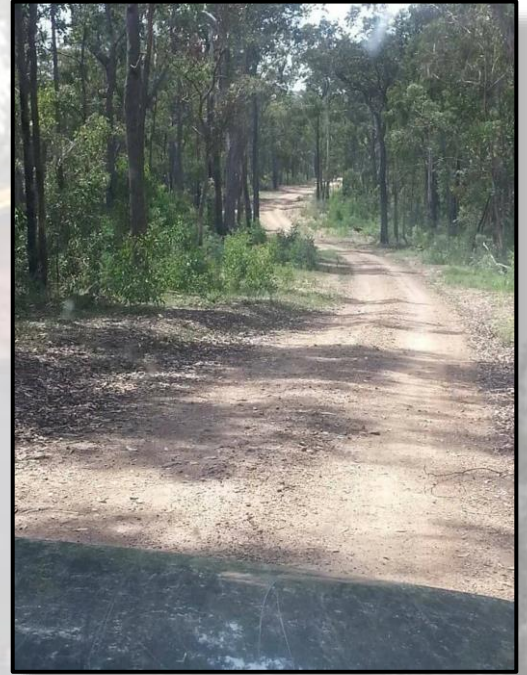
United Petroleum are offering all competitors, officials and spectators the chance to get a discount on all your fuel purchases and raise money for the Alpine Rally of East Gippsland at the same time. For more information go to....

<http://alpinerally.org.au/united-petroleum-support-the-alpine-rally/>

555 180

The Route

- There will be 14 competitive stages, of which two will be over 50km in length.
- The longest distance between refuel opportunities will be approximately 150km.
- The roads are currently in spectacular condition having had some comprehensive maintenance done on them since our last visit.
- The total length of the Event will be approximately 725 km of which approximately 375 km will be competitive.
- It is planned for the majority of the field to be finished on the Saturday prior to sunset.
- First car should be finished on the Sunday around 3 pm.
- There is no town stage in Lakes Entrance this year, but there will be two forest stages comprising Division 1 on the Friday of the event. Scores from this Division will set the start order for the beginning of Division 2 on the Saturday morning.
- Service parks on the Saturday will be at Orbost and Cann River Recreation Reserves and for Sunday will be in Bruthen township.



Vehicle Eligibility

The Event will be open to 2WD Naturally Aspirated Historic Rally Cars, Production Rally Cars, Classic Rally Cars and Club Rally Cars accepted as being suitable for The Event by the Organisers. No 4WD or forced induction vehicles will be considered unless specifically invited by the Organisers.

Vehicles will be grouped as follows.



Group 1 H68 Historic Pre 1968. Vehicles complying with the current HRA Regulations and manufactured prior to 31/12/1967.

Group 2 H81 Historic Pre 1981. Vehicles complying with the current HRA Regulations and manufactured from 1/1/1968 to 31/12/80.

Group 3 PRC Pre 1981. Any car complying with the PRC Rally Car Regulations as published in the CAMS Manual with the restriction that cars must be 2wd, non-forced induction and must be of a type manufactured on or prior to 31/12/1980.

Group 4 PRC Pre 2000. Any car complying with the PRC Rally Car Regulations as per the current CAMS Manual with the restriction that cars must be 2wd, non-forced induction and manufactured prior to 31/12/1999.

Group 5 CRC Classic Rally Cars. Any car complying with the C1 and C2 categories of the Classic Rally Car Regulations as per the current CAMS Manual and manufactured prior to 31/12/86.

Group 6 CLB Group 3 Club Rally Cars. Any cars complying with the Club Rally Car Regulations and manufactured prior to 31/12/86.

Group 7 Invited Cars. Cars considered by the Clerk of Course as vehicles of distinction. Limited to 5 cars at the invitation of the organisers as per 4.5 of these Regulations.

Competitors are advised to study the HRA website and Historic Rally Car, Classic Rally Cars & Club Rally Cars Regulations in the current CAMS Manual carefully before selecting which Group they wish to enter.

RallySafe

RallySafe will again be used for tracking and timing of the event.

All Competitors must make provision in their competition vehicle for the RallySafe GPS tracking system.

Competitors need a current RallySafe wiring loom, antennas and mounting kit installed prior to scrutiny. This is a one-off purchase via the RallySafe web shop. See:

<https://shop.statusas.com/shop/category/rallysafe/>

Installation instructions are available at

<http://rallysafe.com.au/wp-content/uploads/2016/12/Rally-Car-Fitting-Kit.pdf>

The RallySafe system must be wired to **permanent** 12v power.

The RallySafe GPS tracking unit screen will be available at the event, prior to the start. Further details will be in the event Further Regulations.

The cost of the hire of RallySafe GPS tracking unit screen for the event is included in the Entry Fee.

Competitors should familiarise themselves with the use of the RallySafe by reference to the video found at

<https://youtu.be/iDWseIQE42U>



Clothing/Apparel Requirements

Some minor changes have been made to clothing requirements from the last Alpine to reflect some of the changes that have occurred in the CAMS Manual.

During all competitive sections, at minimum each crew member is required to wear:

- A helmet of Level A standard.
- A one-piece flame retardant driving suit complying with SF13.2A/1 (single layer) or superior SFI standard.
- Shoes with leather uppers that cover the foot complying with the FIA 8856-2000 standard. Shoes which have a leather upper but which includes elasticised ankle regions are acceptable (eg, elastic-sided work boots).

Not mandatory but strongly recommended:

- A flame-retardant balaclava complying with FIA 8856-2000 standard
- A HANS device complying with the FIA 8858-2010 or 8858-2002 standard.

Note: This is the last Alpine that a HANS will not be mandatory but don't let that stop you using one this time. They are HIGHLY recommended.

- Socks made from flame-retardant material complying with the FIA 8856-2000 standard
- Flame-retardant gloves (not required for co-drivers) complying with the FIA 8856-2000 standard

You can find all of this detail in Schedule D in the current CAMS Manual

<http://docs.cams.com.au/Manual/GeneralRequirements/GQ05-Schedule-D-2017-1.pdf>

Non rally activities

For those competitors who want to bring their families with them and want something for them to do outside of the rally we have sourced some activities around the region that may be of interest.

Lonsdale Eco Cruise, Lakes Entrance

Departs 1:00 pm, Returns 4:00 pm

Departing at 1:00 pm, you'll cruise out of Lakes Entrance heading for Nungurner. Then along to Box's Creek, Chinaman's Creek, Metung, Rigby, Fraser and Flanagan islands and then to Barriers Landing. Cruise time will be approximately 3 hours, returning to Lakes Entrance at 4:00 pm.

Departure is from the Cunningham Quay, opposite the Central Hotel, The Esplanade, Lakes Entrance.

Make your booking online, pay your deposit, arrive 10 minutes early, it's that easy!

Adults: \$50 / Conc. \$45

Children: \$25 Under 5: Free

Family Ticket: \$120

<https://www.lakesentrance.com/cruises/charter-cruise/item/lonsdale-eco-cruise>



Illuka Spa Treatments at the Esplanade Hotel – 1 The Esplanade, Lakes Entrance, Victoria.

All Elements Package – 2.5 hours - \$250 includes 1 hour massage, 1 hour facia and ½ hour manicure OR pedicure

Ultimate Illuka Package – 2 hours \$240 (best in the couples room with 2 friends) – includes body polish, body wrap, facial and scalp treatment then soak in our Japanese Geisha tub

To book call – 03 5155 3533 or

visit <http://www.illukadayspa.com.au/aveda>

There will also be a cooking class held at the Bellview in Lakes Entrance. We will have more details of that in the next Update.

Accommodation

The Alpine Rally of East Gippsland is supported by the following accommodation providers so please support them with your bookings

- The Central Hotel 03 5155 1977
- Comfort Inn and Suites Emmanuel 03 5155 1444
- Bellevue on the Lakes 03 5155 3055

Accommodation information and bookings can also be made through:
Lakes & Wilderness Tourist Centre 1800 637 060

www.discovereastgippsland.com.au

